

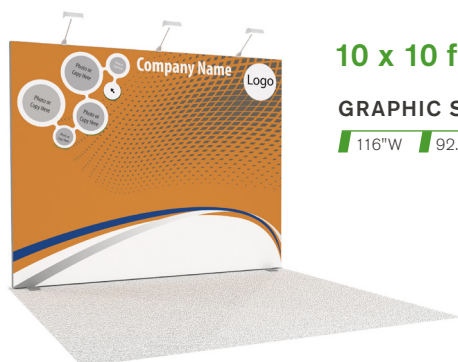
FIT TO PRINT

SmartFabric® is a triple-layered fabric made of 100 percent polyester that's ideal for printed graphics. It's an extremely versatile all-in-one fabric and has been treated to meet NFPA 701 small-scale flammability standards. This lightweight material provides an easy way to make a big impact and has a small shipping footprint to reduce your shipping cost and carbon emissions.



* Client to provide print-ready artwork, or Freeman can design artwork for an additional fee.

SMARTFABRIC® RENTAL EXHIBITS



10 x 10 ft. unit

GRAPHIC SIZE

116"W 92.5"H



10 x 20 ft. unit

GRAPHIC SIZE

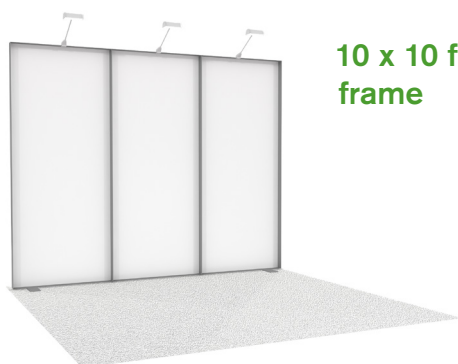
233.5"W 92.5"H

RENTAL EXHIBITS INCLUDE:

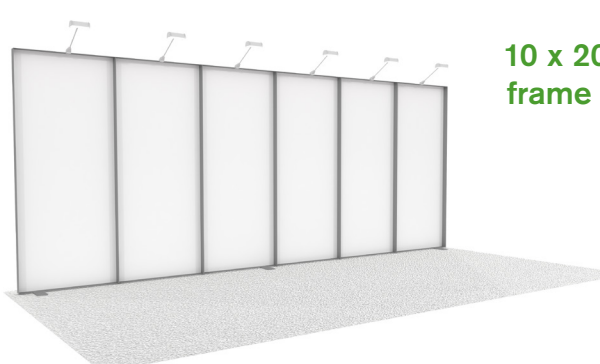
- Custom Fabric Graphic* with zippered carrying case (fabric graphic purchased to keep)
- Rental Frame, a 100% recyclable structure
- 9' x 10' or 9' x 20' Classic Carpet (color selections on page 3)
- Exhibit Installation & Dismantle
- Exhibit Material Handling
- Nightly Vacuuming
- 3 Arm Lights per 10' Booth
- 6 Arm Lights per 20' Booth
- Power for lights only

FRAME ONLY UNIT

If you rented a SmartFabric booth previously, you own the graphic. For subsequent shows, all you need to do is rent the frame. We will install your fabric graphic over the frame.**



**10 x 10 ft.
frame**



**10 x 20 ft.
frame**

RENTAL EXHIBITS INCLUDE:

- Rental Frame
- 9' x 10' or 9' x 20' Classic Carpet (color selections on page 3)
- Exhibit Installation & Dismantle
- Exhibit Material Handling
- Nightly Vacuuming
- 3 Arm Lights per 10' Booth
- 6 Arm Lights per 20' Booth
- Power for lights only

*Client to provide print-ready artwork, or Freeman can design artwork for an additional fee. **Only Freeman SmartFabric will be installed on the frame.

CLASSIC CARPET

Freeman Classic carpet is reused a minimum of four times before being retired from inventory and recycled. Darker-colored carpets such as black and gray, as well as two-toned carpets, are made of 20-25 percent recycled content.

9' x 10' or 9' x 20' (16 oz.) – Color Options Included with Rental Package Options



black



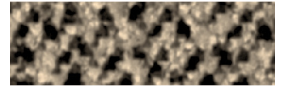
blue



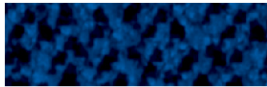
gray



green



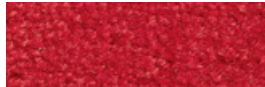
latte



midnight blue



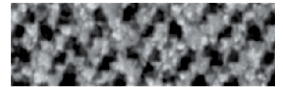
plum



red



red pepper



tuxedo

9' carpet is laid toward the front edge, leaving 1' at the back of the booth for utility port access. Actual colors may vary slightly.

PRESTIGE CARPET

Prestige carpet is for one time use. The carpet for your booth will be brand new and recycled at the end of the show. Renting carpet from Freeman minimizes your shipping footprint.

(28 oz.) – Available Upgrade Color Options



black*



cardinal



charcoal*



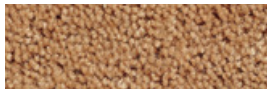
cream



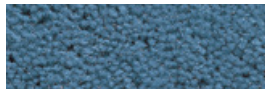
gray pearl*



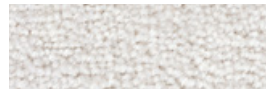
navy*



toast



wedgewood



white*

**Colors available in both 28 oz. and 40 oz. Actual colors may vary slightly.*

OPTIONAL ACCESSORIES

SMARTFABRIC® ZIPPERED CARRYING CASE

20"W 8"H 16"D

One SmartFabric zipper bag is included with purchase.



CLEAR ACRYLIC SHELF

36"W .25"H 12"D

(holds up to 15 lbs each)



CUSTOM GRAPHICS

An exhibitor sales specialist will contact you to review the process for providing your own graphic files or options for using our graphic design services to design your back wall.

FREEMAN SUSTAINABILITY FOCUS



This solution is a clean footprint booth. This rental unit includes a 100 percent recyclable aluminum frame. All flooring, lighting, furniture, and booth structure will go back into inventory to be reused or recycled.

FREEMAN

(888) 508-5054 Fax: (469) 621-5605
ExhibitorSupport@freeman.com

**DISCOUNT PRICE
DEADLINE DATE
APRIL 02, 2021**

smartfabric
FREEMAN

NAME OF SHOW: **MRO AMERICAS / APRIL 27-29, 2021**

COMPANY NAME: _____ BOOTH #: _____ BOOTH SIZE: X
CONTACT NAME : _____ PHONE #: _____
E-MAIL ADDRESS : _____

For fast, easy ordering, go to www.freeman.com/store

SMARTFABRIC EXHIBIT

SmartFabric Exhibits provide a custom printed fabric graphic to keep and reuse on future events.



SmartFabric Rental Exhibit Includes:

- 116.5" X 92.5" Custom Fabric Graphic (Purchased item to keep)
- Carrying Case for Graphic (To carry the purchased fabric graphic)
- Classic Carpet 10' X 10' or 10' X 20' (Select color below)
- Installation & Dismantle of Exhibit
- Material Handling of Exhibit
- Nightly Vacuuming
- 3-Arm Lights (per 10 ft.)
- Power for LIGHTS only

Classic Carpet: ☐ Black ☐ Blue ☐ Gray
☐ Midnight Blue ☐ Red ☐ Tuxedo

Qty	Description	Discount	Standard	Total
_____	10' x 10' SmartFabric Exhibit.....	\$ 2,801.50	\$ 3,922.10	_____
_____	10' x 20' SmartFabric Exhibit.....	\$ 5,401.50	\$ 7,562.10	_____

CUSTOM GRAPHICS

A Freeman Exhibitor Sales Specialist will be contacting you to review the process for providing graphic files and helpful tips that will ensure a successful graphic print.

FRAME ONLY UNIT

The SmartFabric frame only unit is for exhibitors who have previously rented the SmartFabric exhibit (above) and have the fabric graphic ready for reuse. If you need a new graphic made, please select the SmartFabric Rental Exhibit (above). No fabric graphics will be printed without the rental unit.



Frame Only Unit Includes:

- Classic Carpet 10' X 10' or 10' X 20' (Select color below)
- Installation & Dismantle of Exhibit
- Material Handling of Exhibit
- Nightly Vacuuming
- 3-Arm Lights (per 10 ft.)
- Power for LIGHTS only
- Where is your fabric coming from?:
Bringing to show site
In Freeman storage

Classic Carpet: ☐ Black ☐ Blue ☐ Gray
☐ Midnight Blue ☐ Red ☐ Tuxedo

Qty	Description	Discount	Standard	Total
_____	10' x 10' Frame Only Unit.....	\$ 1,833.00	\$ 2,566.20	_____
_____	10' x 20' Frame Only Unit.....	\$ 3,055.00	\$ 4,277.00	_____

ACCESSORIES

Qty	Description	Discount	Standard	Total
_____	SmartFabric Arm Light	\$ 65.00	\$ 91.00	_____
_____	SmartFabric Acrylic Shelf (supports up to 15 lbs).....	\$ 150.00	\$ 210.00	_____
_____	SmartFabric Carrying Case (purchase).....	\$ 20.00	\$ 28.00	_____

QUICK TIPS

• Orders received after the deadline or without payment will be charged the Standard price and are subject to availability. All graphics are subject to a 100% cancellation charge once production begins.

The product offered has recyclable content or has eco-friendly attributes and is 100% recyclable according to manufacturer's specifications.

TOTAL COST

Sub-Total	+	6.5 % Tax	=	Total Cost
-----------	---	-----------	---	------------

CUSTOMER GUIDELINES FOR SUBMITTING GRAPHICS ARTWORK

Our desire is to provide you with the best possible quality graphics for your event or exhibit. You can help us in that effort by providing digital art files using the following guidelines. If you are sending us completed, print-ready files, please pass this information on to your graphics designer. Two overall considerations for submitting acceptable artwork involves proper resolution or size of the file to avoid poor quality images, and proper color matching information and proofs to insure accurate color reproduction.

PLEASE PROVIDE THE FOLLOWING WHEN SUBMITTING ART

Minimum requirements for original artwork, such as logos, when Freeman is providing design and layout:

- 300 dpi resolution at a size of 8 x 10 inches (higher resolution files will result in improved final product)

Minimum requirements for final artwork that Freeman will reproduce exactly as provided:

- 100 dpi resolution at full size of actual finished product

Minimum requirements for both:

- All related PMS and/or CMYK color codes
- Accurate color proof print of artwork
- Contact name, phone number and e-mail address of art creator if applicable
- If submitting a "vector" file, include all fonts, or convert fonts to outlines or paths

We are capable of working with both PC and MAC based software, and can accept art created with the following software programs (listed in order of preference):

- ADOBE—Illustrator, InDesign, and Photoshop
- COREL DRAW
- MACROMEDIA freehand
- QUARK XPRESS

Files should always be saved in their native format.

Files that Freeman **can use** in order of preference, include:

- EPS and AI (especially when submitting logos)
- TIF (especially when submitting photos)
- JPG (provided resolution is high enough for photo images; not recommended for logos)

File types that Freeman **cannot use** to reproduce high quality graphics include:

- GIF files
- Microsoft Office software files such as Word (.doc), or PowerPoint (.ppt) file types
- Self-extracting files, such as EXE or SEA files

• Artwork files that are of acceptable resolution as listed above will typically be too large to send via e-mail. Files may be saved and sent via overnight delivery on either a CD-ROM or a DVD, along with the hard-printed proof copy. (Floppy disks and zip drives are not a good option for sending large graphics files.)

• Large files may also be posted to Freeman's FTP site for downloading—you may get the password and other needed information from your Freeman service representative in order to post files. However, a hard paper proof print must also be sent via overnight delivery in addition to posting the electronic files.

CUSTOMER GUIDELINES FOR SUBMITTING GRAPHICS ARTWORK

Our goal is to provide you with the best possible quality graphics for your event or exhibit. You can help us in that effort by providing digital art files using the following guidelines. If you are sending us completed, print-ready files, please pass the following information on to your graphics designer or art department. Artwork must be submitted in the proper resolution and/or file size to produce quality images. Please provide proper color matching information and proofs to ensure accurate color reproduction.

PLEASE PROVIDE THE FOLLOWING WHEN SUBMITTING ART

RASTER ART (photos, logos containing any continuous tone images):

- Art submitted at 1:1 (100%), resolution should be no less than 60 dpi (100 dpi preferred)
- Art submitted at 2:1 (50%), resolution should be no less than 120 dpi (200 dpi preferred)
- Art submitted at 4:1 (25%), resolution should be no less than 240 dpi (400 dpi preferred)

VECTOR ART:

- Logos should be vector and have outlined fonts (if provided as bitmap, please use high-res images)

FONTS and LINKS

- Supply all fonts used in your design (zip Mac fonts). If unsure how to collect fonts, convert them to outlines
- Supply all links used in your document. Use packaging feature if available. If unsure how to collect links, embed them in the file when saving.

COLOR

- If PMS color matching is required, please use original Pantone + Solid Coated swatches in your artwork. Modifying Pantone names will result in printing default color (CMYK)
- CMYK artwork will be produced "As Is". Our color output is balanced and vibrant.
- Convert RGB art to CMYK if possible.
- If you are sending Certified Color Proofs (Gracol, Swop, Fogra), please provide ICC file information used to print your samples. Best option would be to include ICC chart on your prints.

ARTWORK IN THE STRUCTURE

- Please note that any panels going in the metal frame will hide 1/4" of your art all the way around. If you have a continuous wall where individual panels are divided by metal, use 1.25" spacing in between each panel to account for gaps and the natural flow of the graphics.

ACCEPTABLE FILE SOFTWARE

We are capable of working with both PC and MAC based software, and can accept art created with the ADOBE Creative Suite - Illustrator, InDesign, and Photoshop

Always provide the following:

- Native files with fonts and links (zipped)
- High-res PDF-X/4 exports of the files

ACCEPTABLE FILE TYPES and SUPPORT FILES

NATIVE FILES:

- AI CLOUD (CC) file with Packaged supporting links and fonts. You may keep images linked but Packaging feature must be used.
- AI (CS6, CS5, CS4...) file with embedded links and outlined fonts
- EPS file with embedded links and outlined fonts
- INDD file with Packaged supporting links and fonts

PRINT FILES:

- High-res PDF-X/4 (preferred)
- AI with PDF content (choose this option when saving file)
- EPS files with embedded links and outlined fonts

RASTER OR BITMAP ART:

- Photoshop EPS (preferred, use 8-bit preview, Max, Quality JPG compression)
- PSD (make sure font layers are rasterized)
- TIFF, JPG (quality 8 and higher)

Mac users: Use Zip or Stuffit programs when submitting fonts other than OTF (Open Type Fonts)

WAYS TO SEND ARTWORK

• Files below 10 MB can be delivered via email. Larger files may be posted to Freeman's FTP site. You may get the password and other needed information from your Freeman service representative in order to post files. However, a hard copy proof and backup of the files on CD-Rom/DVD may be required to be sent via overnight delivery in addition to posting the electronic files. Please call (407) 816-7900 for assistance.

NAME OF SHOW: **MRO AMERICAS / APRIL 27-29, 2021**

COMPANY NAME:	BOOTH#:
ADDRESS:	BOOTH SIZE X
CITY/STATE/ZIP:	
CONTACT NAME:	PHONE #:
CONTACT EMAIL:	

Payment Information

Freeman only accepts payment information electronically. Place your order on FreemanOnline or follow the steps below to provide your payment information electronically and submit your order forms.

Freeman will no longer accept cash payments for any Freeman Services.

1. Submit your payment information

Proceed to our electronic Freeman Pay site to securely submit your payment information
<https://www.freemanpay.com/452832>

2. Submit your order

Upload your order forms through the same link used to submit your payment information

- Both your order and your payment must be received by the discount deadline date to guarantee discount pricing.
- Orders received without payment or after the discount price deadline date will be charged at the standard price.
- Copies of invoices may be picked up from the Freeman Service Center prior to show closing.