

**RADZIWILL**

We deliver solutions.

# **Automated Engine Inspection** solution

Detection of **all externals**, within **6 minutes**, **fully automated**.  
Powered by **AI**.

## Picture of the CFM56-7B

**e.g. CFM56-7B**

2026-04-21, Rev. 00

- Photorealistic 3D model “**digital twin**” of **every** engine

Automated Engine Inspection by RADZIWILL

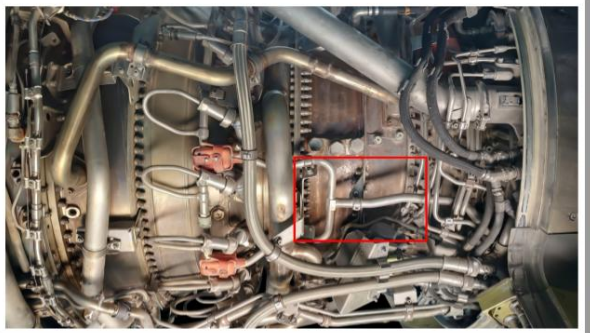
Engine Inspection Suite

### Inspection Results

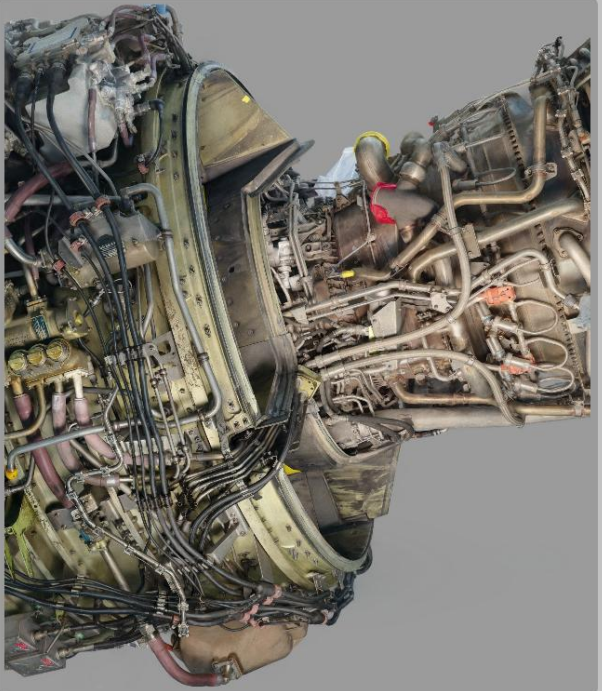
CFM56-7B 010 DEMO (Sept. 16, 2) Export to Excel All Components Selected: Fuel Line - Present

| Component                       | Status  |
|---------------------------------|---------|
| Fuel Line                       | Present |
| Tube Hose Oil                   | Present |
| Oil Return Hose                 | Present |
| Duct Assy Intersection Manifold | Absent  |
| Tube Assy                       | Present |
| Oil Tube Hose                   | Present |
| Valve Turbine Clearance         | Present |
| Fuel Manifold Distribution      | Present |
| Bracket Assy                    | Present |
| Component 12 - TBD              | Present |

**Component Preview**  
Fuel Line  
pre S/B no.: 340-014-602-0 | Detection: Present | Model: segmentation



**3D Model Viewer**  
3D Model Available  
3D model loaded successfully



- **Computer vision** and **AI** powered component detection
- Instant **Bill of Materials** (BOM)
- Permanent **digital record** for audits, regulators, lessors, and customers

- Right off the ship stand, while **on your existing crane**
- **Autonomous** full 3D scan completed **within 6 minutes**
- **Reduce** turnaround time (**TAT**) and **increase** engine **throughput** per bay
- **Standardize** inspections across locations, shifts, and technicians



**Picture on request**

## Business case for an MRO

Assuming throughput of **100 engines** per year

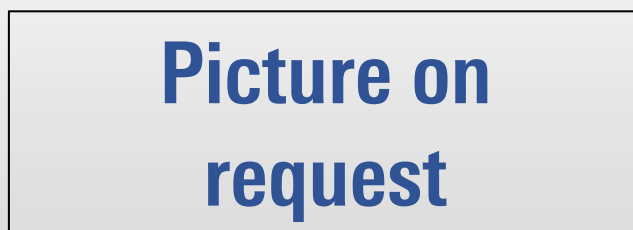
|   |  |                 |
|---|--|-----------------|
| <b>Financial savings</b>                  | • Billing disputes, penalties & increased quality        | 360 k           |
| <b>Additional profits</b>                 | • Sell USM for a complete engine                         | 200 k           |
| <b>Improved Operations</b>                | • Reduction in labor hours (technicians and back office) | 440 k           |
| <b>Total uplift of yearly performance</b> |  | <b>USD 1 m*</b> |

\* Based on assumptions.

## Automated Engine Inspection solution

### Hardware:

Engine Scanner



### Software:

Engine Inspection Solution

#### **Flex license**

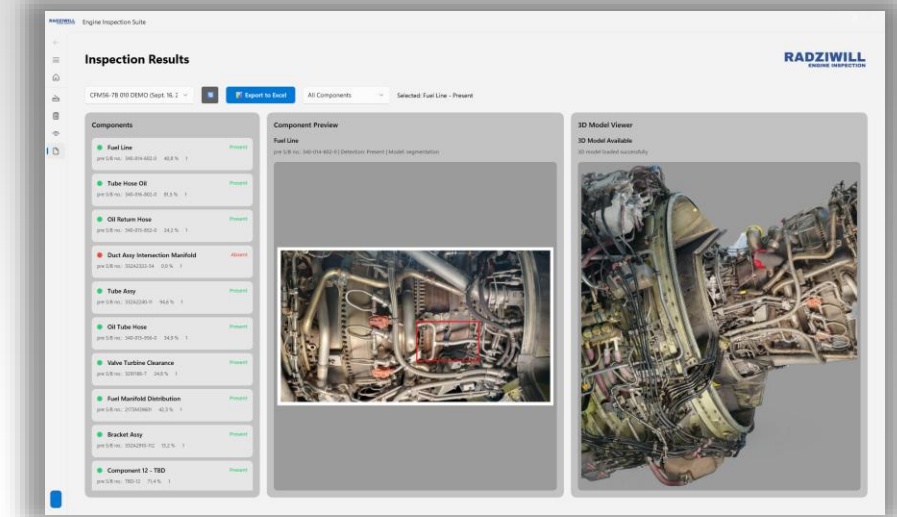
- Per scan
- Limited list of detectable parts.

#### **Flat rate**

- Monthly fee
- Open interface

# Automated Engine Inspection

- **Pioneers** in autonomous full 3D engine scanning for MRO and engine shops
- Automated **360° engine capture** — no manual photo sessions, no missed angles
- Instant **full Bill of Materials (BOM)** for all visible components on the engine
- Photorealistic 3D **“digital twin”** of the engine for documentation and review
- **Autonomous** full 3D scan completed **within 6 minutes**, ready for your team
- Rock-solid visual documentation that **reduces billing disputes** and warranty issues
- **Identify, quote, and sell spare parts faster** with precise visual **traceability**
- **Reduce** turnaround time (**TAT**) and **increase** engine **throughput** per bay
- **Standardize** inspections across locations, shifts, and technicians
- Create a permanent **digital record** for audits, regulators, lessors, and customers
- **Costs:** Hardware + Software (Flex license or flat rate)
- Two **patents** pending



Picture on request

## Summary

2026-04-21, Rev. 00

**RADZIWILL** is thrilled to automate your engine inspection.

Radziwill GmbH  
Fabrikstrasse 34  
8005 Zurich  
Switzerland

System analysis and engineering consulting  
+41 78 302 67 68 | [www.radziwill.ch](http://www.radziwill.ch)